



# iSpyCams

For iPhone and iPod Touch

## Getting Started Guide

**iSpyCams** is the most comprehensive **IP video surveillance software for iPhone and iPod Touch**. Monitor your home, office or warehouse activities from anywhere in the world. You can start viewing your network (IP) cameras right after you install iSpyCams.

iSpyCams supports the widest choice of IP network cameras from more than 50 manufacturers including Axis, D-Link, Genius, JVC, Lenovo, Toshiba and others.

With iSpyCams you can:

- View live, full motion video from your IP network camera.
- Watch any public webcam streaming places of interest worldwide.
- Control Pan – Tilt – Zoom cameras.

**Very EASY to setup – No special equipment required!**

In addition, you get:

- Access to directory of public webcams.
- Free frequent updates responding to your feedback & wishes.
- Free technical support via email.

# 1. Camera lists

---

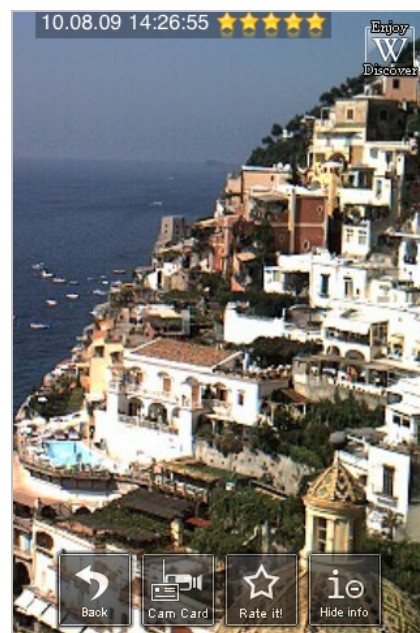
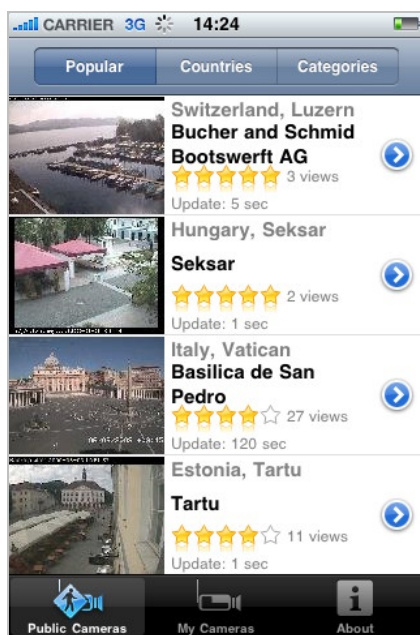
There are two camera lists in iSpyCams – **Public cameras** and **My cameras**.

## Public cameras

**Public cameras** contain a predefined list of public IP cameras from all over the world. You can view and rate public cameras that are added weekly.

Every camera can be found in some camera category or by its geographical location. The most viewed and high-rated cameras make up a list of popular cameras.

Also you can learn many interesting things about the view shown by a specific public camera on Wikipedia. Tap "Enjoy and discover" sign on the top right corner of the screen.



## My cameras

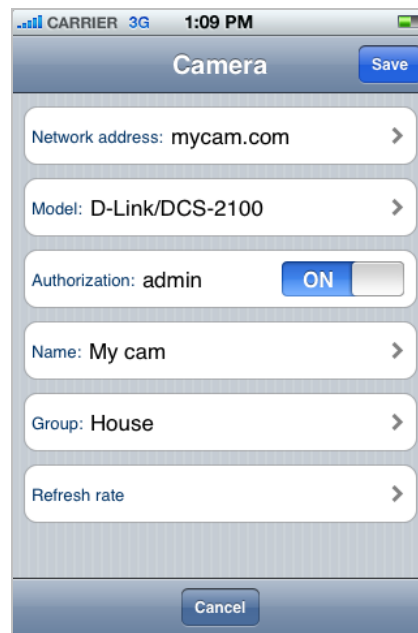
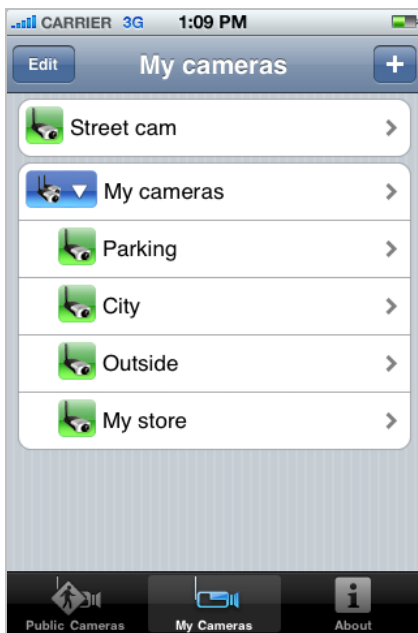
At first start **My cameras** list is empty. You can add network cameras (public or your own) and view them directly.

### Add camera


To add a new camera to your camera list you should tap **plus (+) button**. Enter camera's network address, port, authorization data (login and password) if it is needed. You are also asked about the camera manufacturer and the model (this will speed up camera testing procedure). If you are not sure you may not enter this information.


### Camera groups

If you want to view several network cameras simultaneously you should unite them into one group. Specify the group name for the camera while adding or editing the camera. One camera group can contain up to 16 cameras.



### Test connection

Before saving the network camera the connection to it must be tested. If the test is passed successfully you will see the new network camera icon  in your camera list. You can view this camera immediately.

If the test failed you are recommended to edit the camera settings. You can also save it anyway and the camera with an icon  (not tested) will appear in your camera list. In this case the test will be launched automatically at every connection attempt.

You can expand and collapse camera group by tapping the button on the left of the camera group name.

## 2. Connecting to the camera

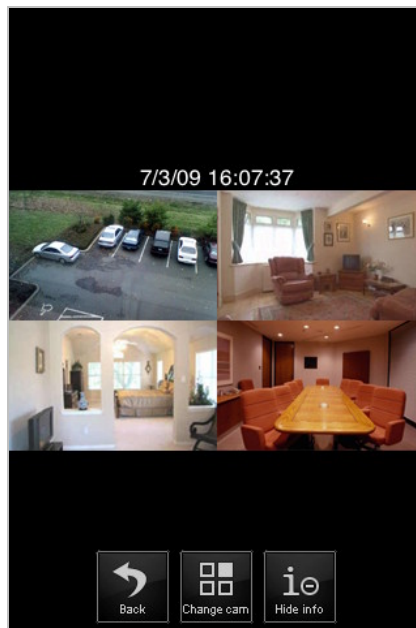
To connect to the camera or the camera group tap the camera or group name in **My cameras** list.

**Note:** If the camera is included into a camera group you may view this camera in the group (multi-camera view) or connect to it separately.

After the 'Connecting...' screen the application starts showing the image from your cameras. If you tap the screen (in any point) a group of control buttons will appear at the bottom of the screen. To hide the control buttons tap the screen once again.



To change the camera tap **Change cam** button in a group of control buttons. Then you should tap the number of the camera you want to see separately. To get back to the multi-camera view tap **Multi-cam** control button.



Use **Show/Hide info** control button to show/hide additional information like a timestamp.

You can **Zoom in and out** by pinching open and close. Double tap will zoom out camera image to fit the screen.

If the camera supports PTZ (Pan-Tilt-Zoom) a **PTZ mode** button will appear in the group of control buttons. Tap this button and you'll be able to control your camera.

**Note:** Please enter the manufacturer and the model of your camera in the new camera form to be able to control your PTZ camera. Otherwise the camera may not be recognized as PTZ camera during the testing procedure.

To get back to the camera list and disconnect from the camera tap **Back** button.

### 3. Support

---

If you faced with any problems while using the application please read the FAQ section (open About screen and tap **FAQ** button). If you need some further assistance after reading the FAQ section you can send a request to our support team right from the application (tap **Support** button on the About screen).